

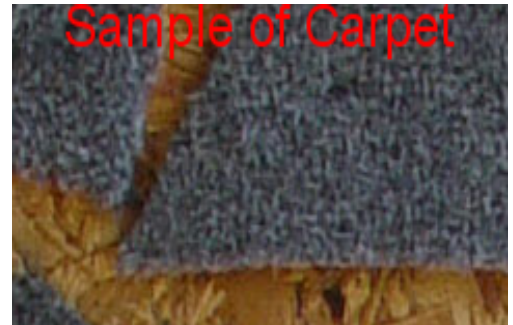
# Mid-Deck™ Construction Instructions.

## Tools Needed

- Pencil/Pen
- Tape Measure
- Circular Saw/Table saw (handsaw if you have patience!)
- Jigsaw (Suggested, though a handsaw would work!)
- Razor/Utility knife
- Staple Gun
- Square
- 1" Drill bit (Spade bit) or a jig saw to "cut" a 1 inch hole and drill

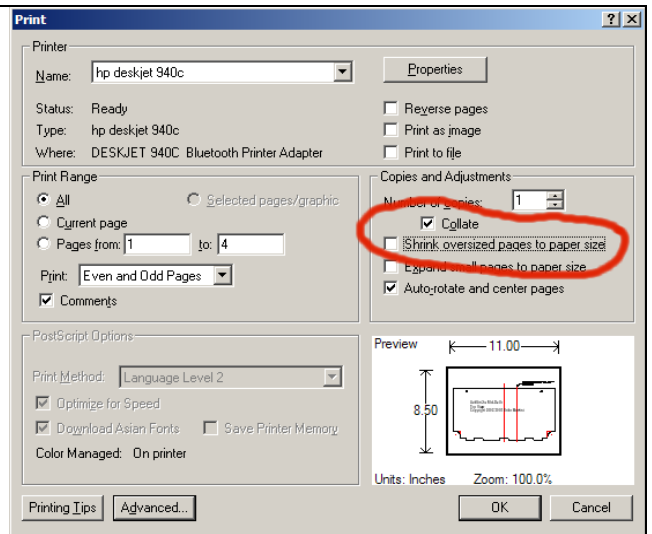
## Materials Needed

- 1/2" (suggested – for weight / ease of lifting) or thicker Plywood or OSB at least 32"x 61"
- Staples for your staple gun
- 3ft x 6ft (2 sq. yards) piece of carpet (Suggested rubber backed Marine Carpet from Lowes, I would recommend a "loose Pile" (Shag, not looped) )
  - o \*\*\*Don't go too THICK on the carpet, it will be harder to wrap! These measurements allow for at least 1/4" non-compressible thickness for the carpet. Anything much thicker, and you may have to trim things out a bit more.



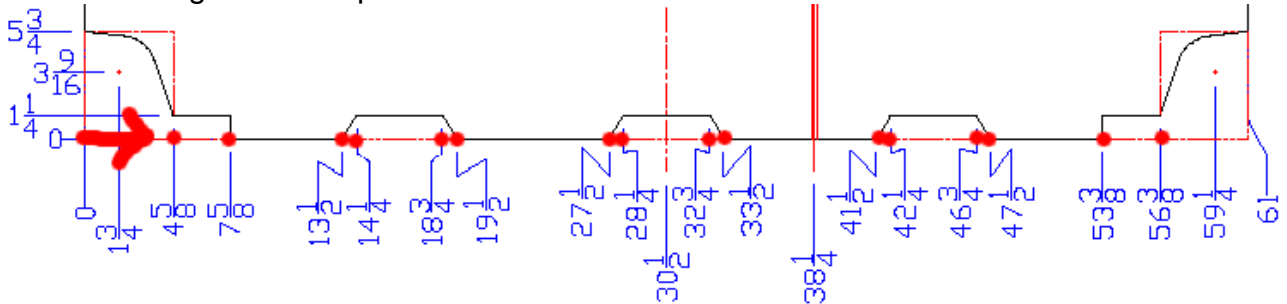
## LAYOUT

1. Print out all 4 pages of the document. (Make sure that the check mark is CLEARED in Shrink oversized pages to paper size)
2. Try to use 2 "factory" edges of the wood for one corner. Preferable that corner is in the Lower Right
3. Cut the wood down to 61" x 31 3/4" using your circular saw or table saw

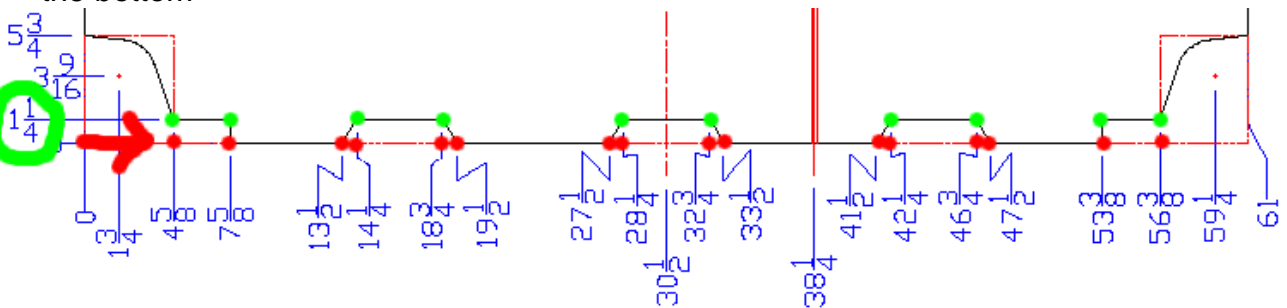


**NOTE – Always take your measurements from the 0,0 point (lower left corner)**  
**This will ensure accurate measurements**

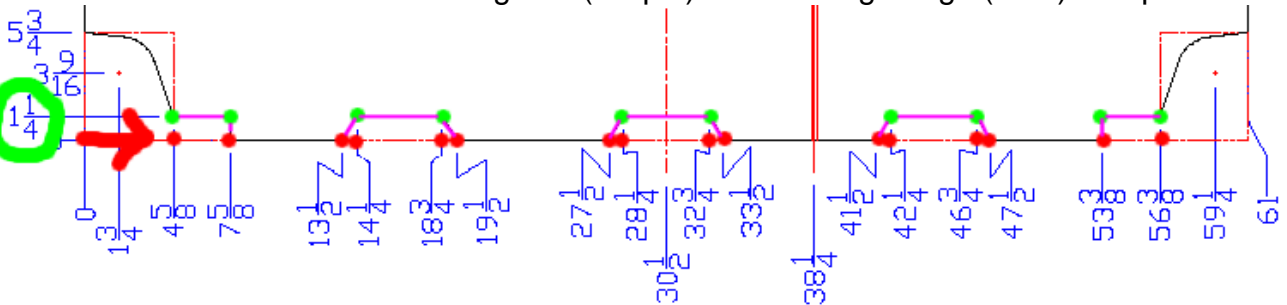
4. Starting with the left hand side of the 61” edge, take your tape measure and mark off all of the points **along the lower edge** as indicated by the red dots. Also mark off the 38 ¼” line if you are building a “40/60 split”



5. Measure UP from the bottom (Using your Square) and mark all the points in green 1 ¼” from the bottom

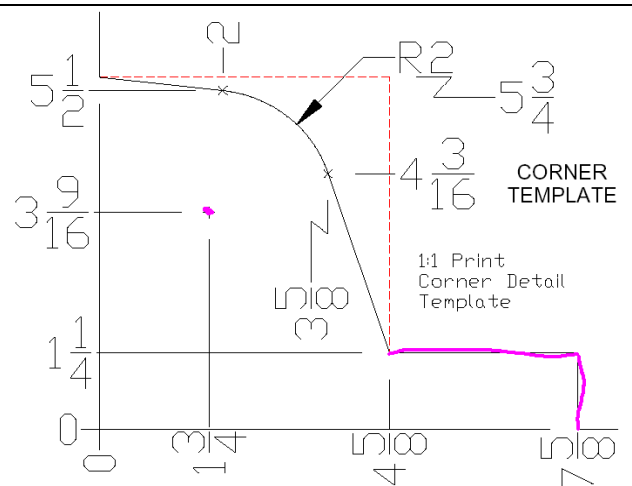


6. Connect the Dots that are in Magenta (Purple) with a straightedge (ruler) or square



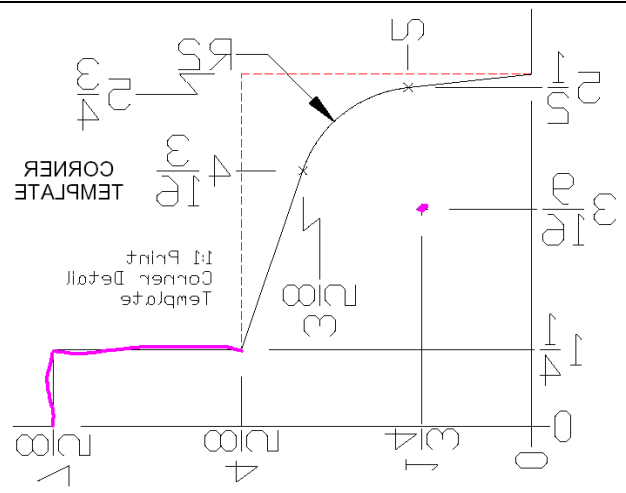
7. Take your Corner Template and use it to mark the left hand corner curve. You may wish to trim it so that you can trace it if you need too. Use the previously marked measurements and lines that you drew for a placement guide. Measurement 0,0 should be on the corner of the wood

NOTE: If you will not be able to cut the angles and curves with your tools, you should probably just cut out the red dashed line instead.

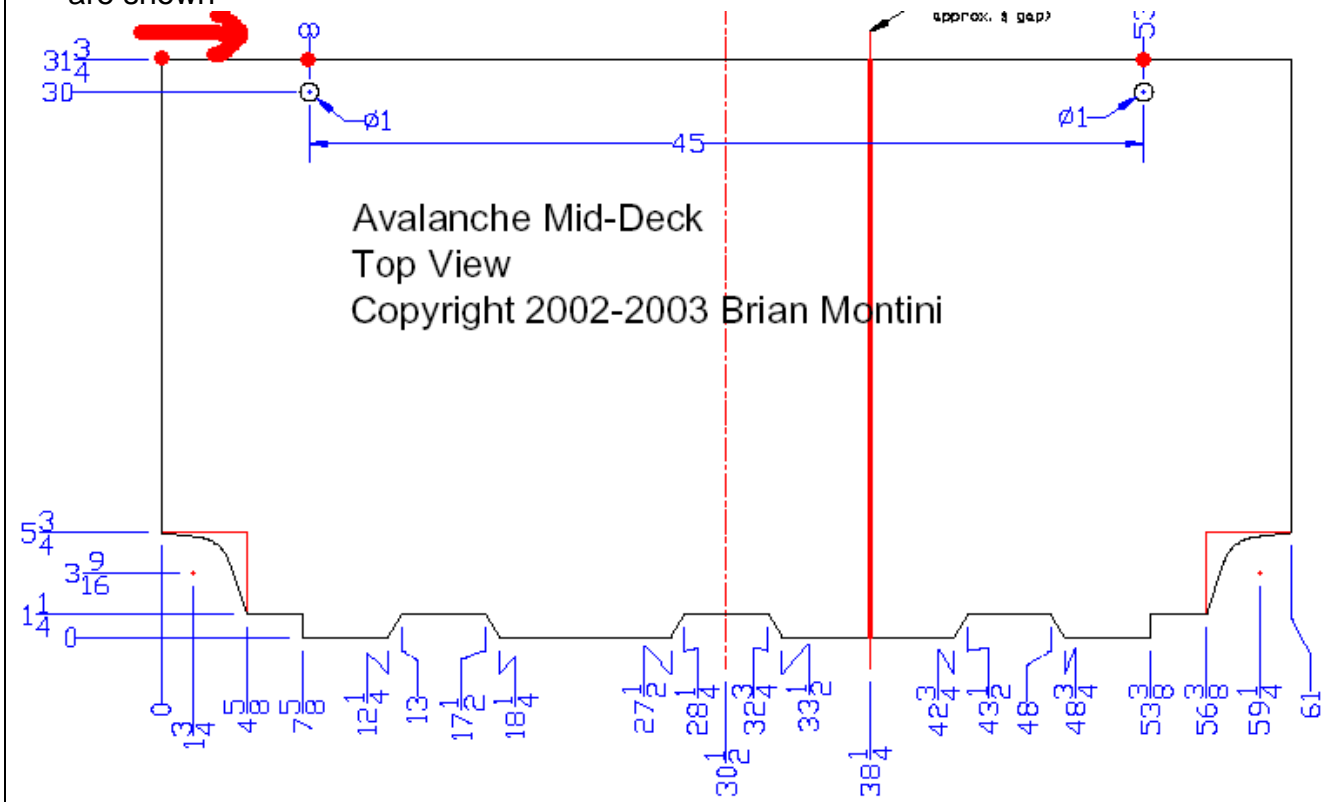


8. Flip your template over and do the right hand side

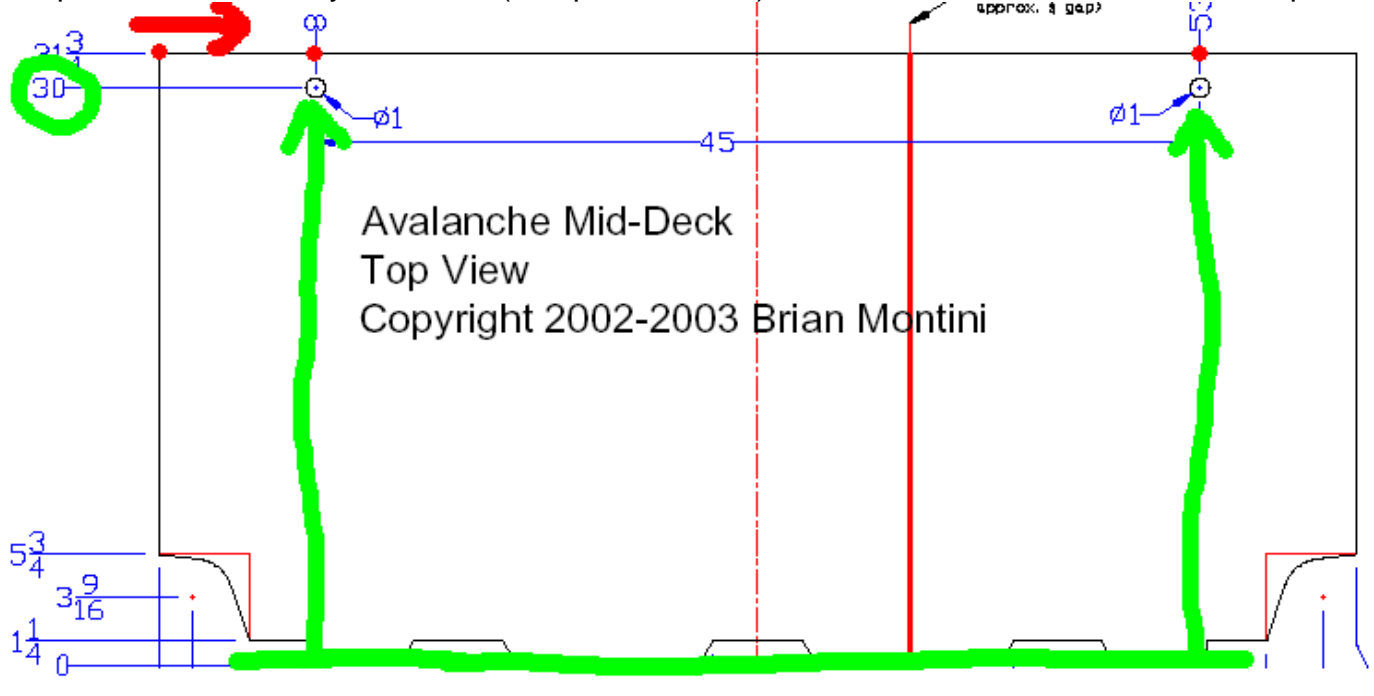
*It should be starting to take form, you are almost there!*



9. Measure from the Top left Edge to the left 8 inches and 53 inches and mark where the red dots are shown



10. Measure up from the bottom 30 inches intersecting with the previous marks that you made to place the center of your circles (bumper recesses) These marks should be 45 inches apart



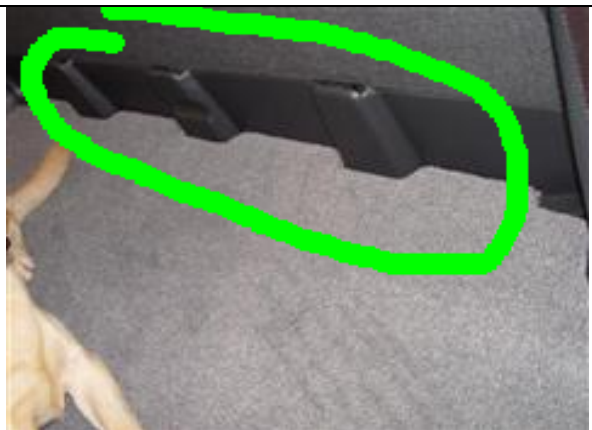
11. The shape of the Mid-Deck™ should now be quite apparent.

12. DOUBLE CHECK ALL MEASUREMENTS

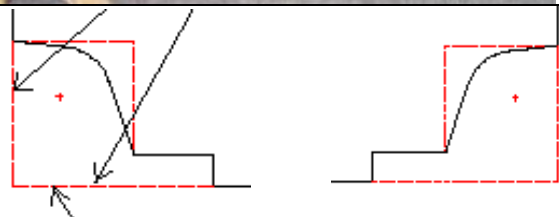
### CUTTING

13. Using a Jigsaw (or your trusty handsaw) cut the 3 central notches that will mate with your midgate

**Remember, it is always better to cut off too little than too much!**



14. Continue cutting out the left and right notches and curves



- 15. Drill 2 small pilot holes for the rubber bumpers (just to check the location)
- 16. At this point you can check the fit of it in your AV. Move the front seats up a bit, drop the back seats down and into position. Test fit the board into your AV. It should rest ON THE LEDGE of the midgate, and fall down to lay upon the rubber bumpers on the back of the folded down seats.. The fit should be a "Little" loose along the back side, the carpet will help fill the gaps. If something is "rubbing" trim it a bit.

- 17. If things are good. Drill out the two 1" holes that accept the rubber bumpers

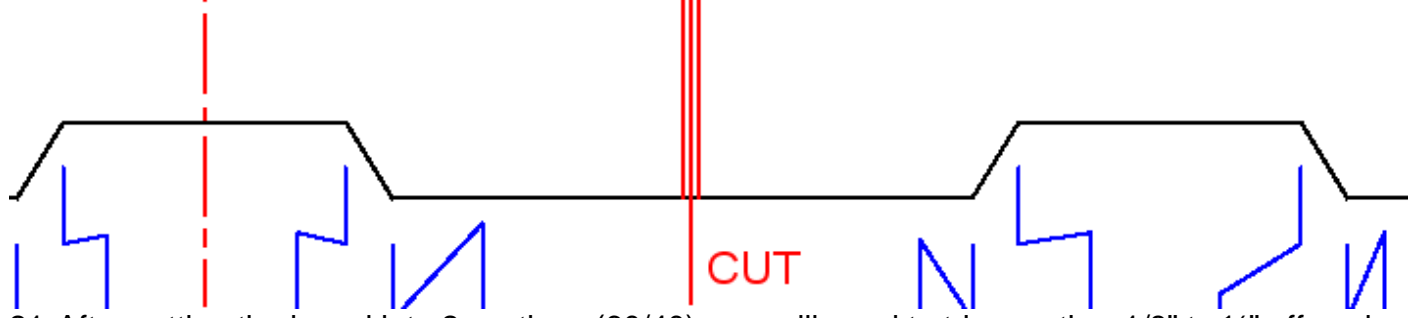
**Note: The carpet in the picture is for example only, you have not done anything with carpet yet.**

- 18. Test fit again. Trim anything that rubs.
- 19. Now, PUSH BACK the Front Seats. You \*MAY\* have to remove material from the top (front) edge to allow your seats to go all the way back. Keep in mind that you will probably want about 1/8" to 1/4" gap in the top and bottom edges (front and back edges) so that you have room for your carpet to wrap around.

IF YOU ARE **NOT** BUILDING A SPLIT MODEL.  
Jump to Step 23



- 20. IF you wish to do the 40/60 split, you need to slice the board down along the 38 1/4" mark (DOUBLE CHECK THIS WITH THE SPLIT IN YOUR SEATS BEFORE CUTTING! I can't guarantee Chevy hasn't changed anything since mine in Dec '01!!!



- 21. After cutting the board into 2 sections (60/40), you will need to trim another 1/8" to 1/4" off each one to make room for your carpet to wrap around the boards
- 22. Test fit in all 3 configurations (small seat flipped only, large seat flipped only, both flipped), trim if necessary.

- 23. If everything fits well, lets get to Carpeting

**CARPETING**

- 24. I chose to start with the long, straight edge for starting my carpeting. Lay the carpet face down, and then the board on top of it.
- 25. Wrap about 3 inches of carpet around the longest edge, pull it tight, and staple it to the underside of the Mid-Deck™
- 26. Progress to the 2 ends, pull them tight, and staple. Check for wrinkles! Cut the 90 degree corners at 45 degrees where they wrap around so you get a nice fit, like the picture above



27. I can't really give more carpeting instructions from here on in, but **PATIENCE IS THE KEY**. For bends, cut slits, wrap and staple. Keep checking for wrinkles...

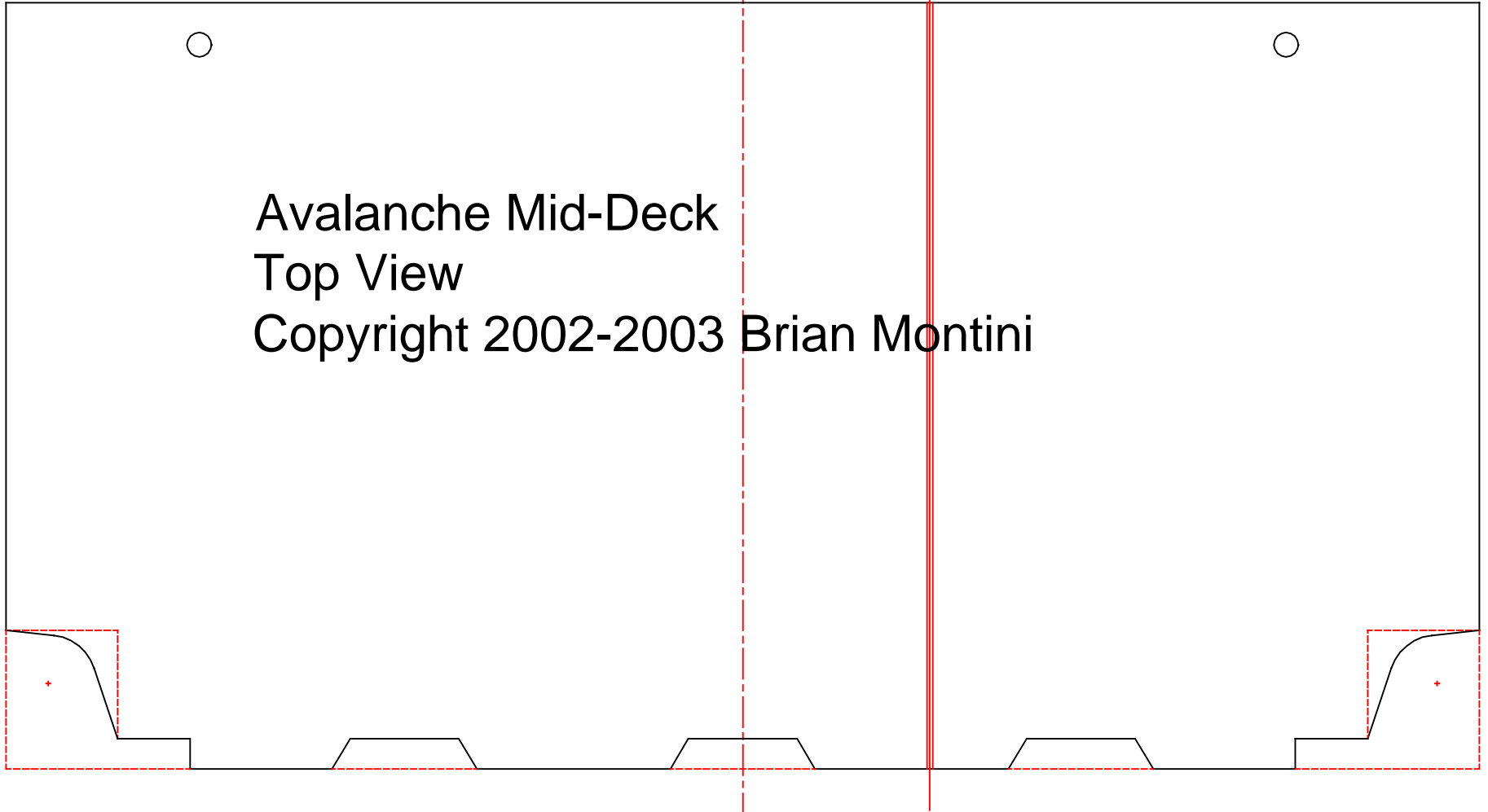
28. **HIGH RESOLUTION PICTURES** are available on my website <http://ww2.skiggles.com:82/Avalanche/MidDeck/MidDeck.htm> and this may help you see how I did the carpeting. (as well as the picture above)

29. You will need to make 2 square (or round if you are good!) cutouts in the carpet for the rubber bumpers to go into the holes you drilled earlier

30. Drop into place.... **YOU ARE DONE!**

For help or questions, please email me at **MIDDECK@SKIGGLES.COM**

Cut here for 60 / 40 split, gap according to your carpet thickness (recommend approx.  $\frac{1}{4}$  gap)



Avalanche Mid-Deck  
Top View  
Copyright 2002-2003 Brian Montini

Avalanche Mid-Deck  
Top View  
Copyright 2002-2003 Brian Montini

